

***Smart & Innovative
PAD Series Integrated
Solar Street Light***



With battery power & working status indicator leds

Product Looks



Breakdown diagram



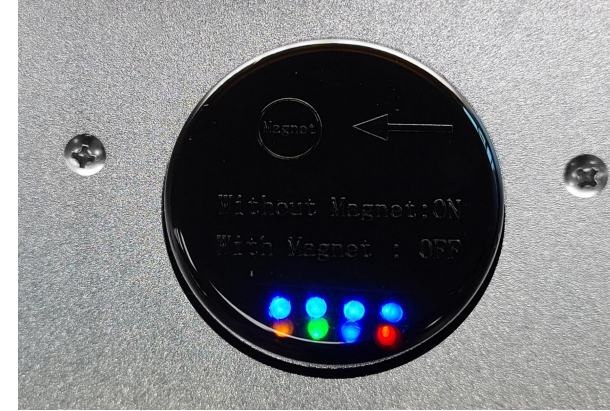
Highlights



1. **Anodized Die-casting aluminum alloy** appearance, sturdy and durable, strong corrosion resistance.



2. Super brightness branded BridgeLux led chip, **220lm/w.** professional optical, and transmittance rate 95%.



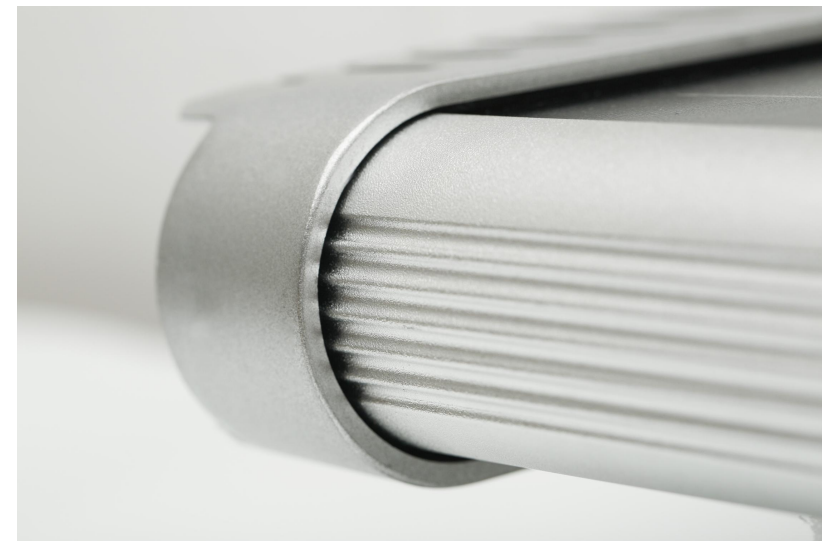
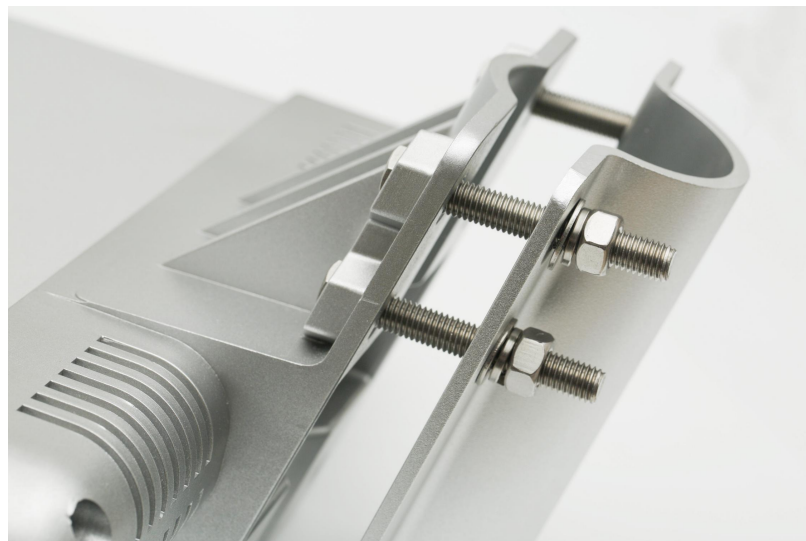
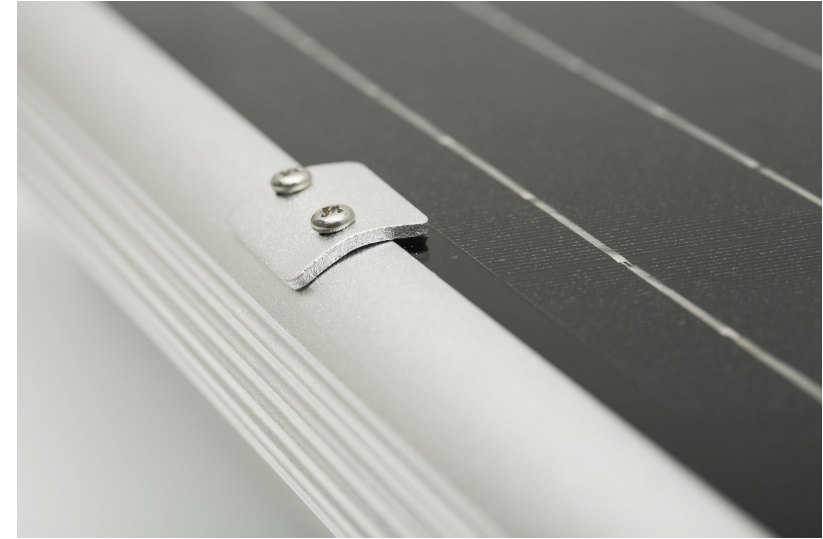
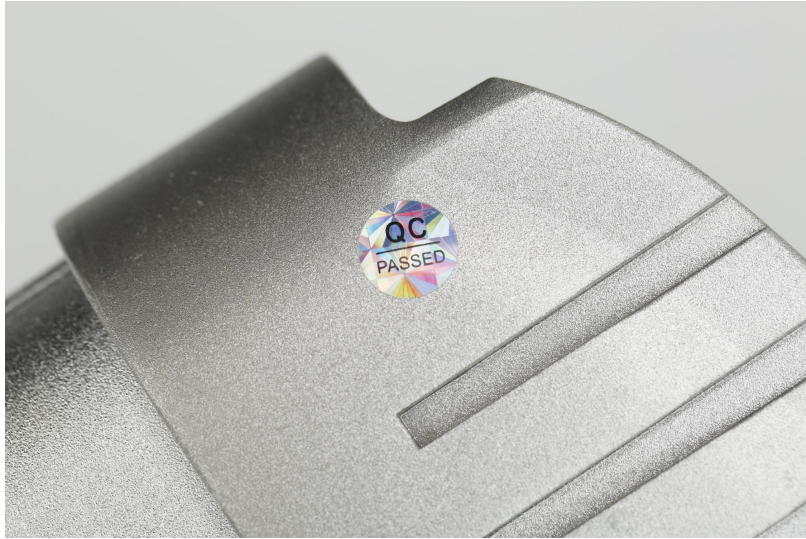
3. Integrate microwave motion sensor + magnetic switch + smart controller in one box, **with working status indicator and battery power indicator**



4. **Brand New A grade** LifePO4 battery, **>2000** times deep cycle, **8-10** years lifespan.

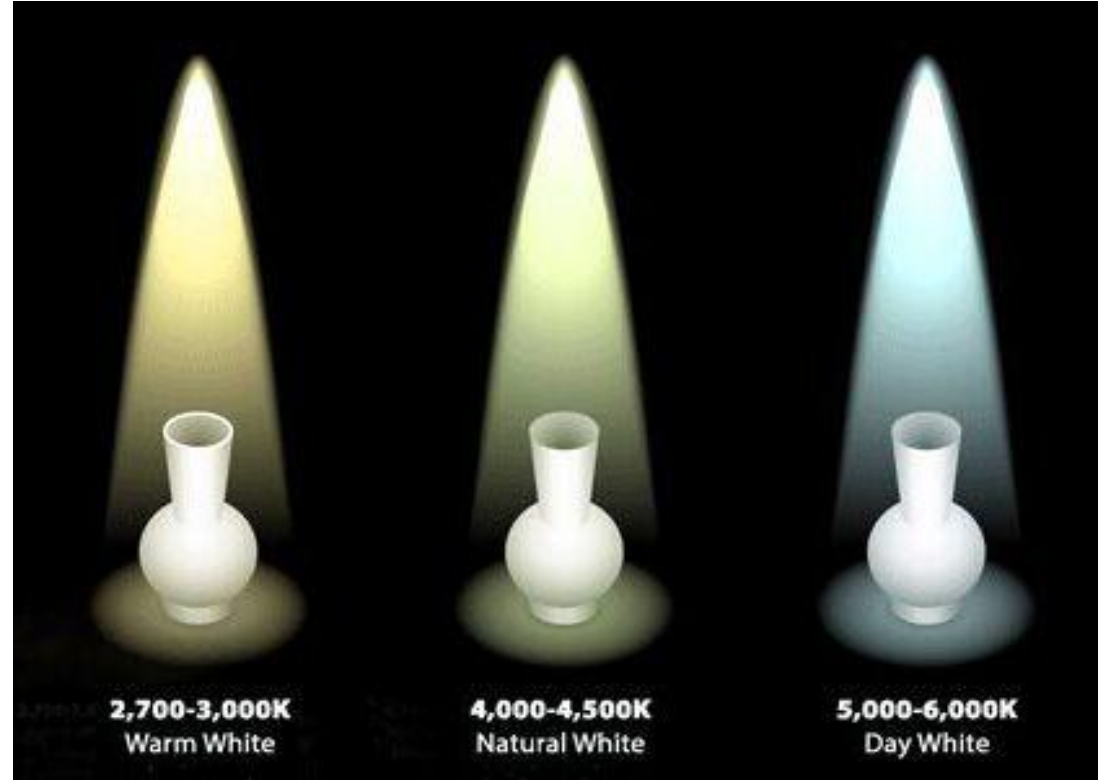
Die-Casting Aluminum Alloy(Patent design appearance)

Whole lamp is aluminum alloy materials, appearance done with anodic oxidation treatment, makes lamp stronger corrosion resistance and rust resistance, longer lifetime.



High Efficiency Bridgelux Led Chip

210LM/W high efficiency led chip, 100000 hours lifespan, has 2700K-6500K color temperature available.



Unique Design

R&D by ourselves, patent design controller + power switch+ microwave motion sensor all in one box.



1. With Magnet Switch



Before mounted on the pole,
take away the magnet iron sheet.

2. With Battery Power Indicator



3. With Status Indicator LED



1. There are four blue ledspower indicators, each blue light represents 25% of the power
2. Four blue leds light on means 75%-100% power, three blue leds light on means 50%-75% power, two leds light on means 25%-50% power, one led light on means 25% power.

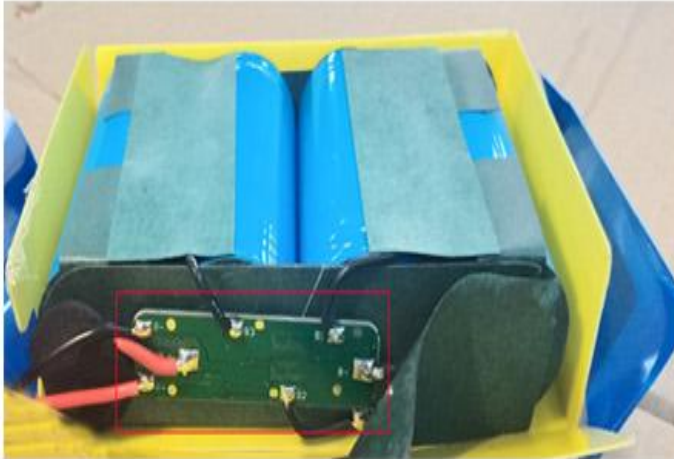
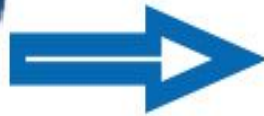
Solar Light Controller Status Indicator		
Indicator Light	Status	Indicator Light description
① Yellow (Motion sensor)	On	Movement Detected
	Off	Without Movement Detected
② Green (LED)	On	LED with output: Light on
	Off	LED without output: Light off
	Flicker	LED Short circuit
③ Blue (Battery)	On	Battery power enough for work
	Off	Battery Without output
	Flicker	Battery undervoltage
④ Red (Solar panel)	On	Battery charged to full power
	Off	Solar panel without output (at night)
	Flicker	Solar panel is charging the battery
⑤ Red & Green & Blue	Cycle light on in sequence	Battery cable plugged in backwards, poor battery connection contact, faulty battery, no battery connected

Brand New A Grade LifePO4 Battery With Protection Board

Work temperature -25°C - 65°C , When the temperature below 25°C or above 65°C , the battery protection board will auto-start protection function, make sure the battery doesn't get burnt out.



Brand new A grade battery cell



With battery protection board



Battery Pack

Excellent Quality Mono Solar Panel



Support controlled by remoter

- Use UVA technology,remote distance can reach 50M,four lighting modes for choose,can direct penetration of obstacles and according sunshine of each season to adjust.
- The most suitable mode can be selected according to seasonal sunshine conditions.



-  OFF No matter day or night,light "OFF"
-  DEMO No matter day or night,light "on" for 1 minute.
-  L At night,12hrs full power.
-  T At night,4hrs full power+8hrs 25%
-  U At night,4hrs full power+8hrs motion sensor control.
-  M At night,12hrs motion sensor control.

Note: After press "OFF", The light off and won't on anymore. please press "M" to resume, it will working with "M" mode again.

With Microwave Sensor

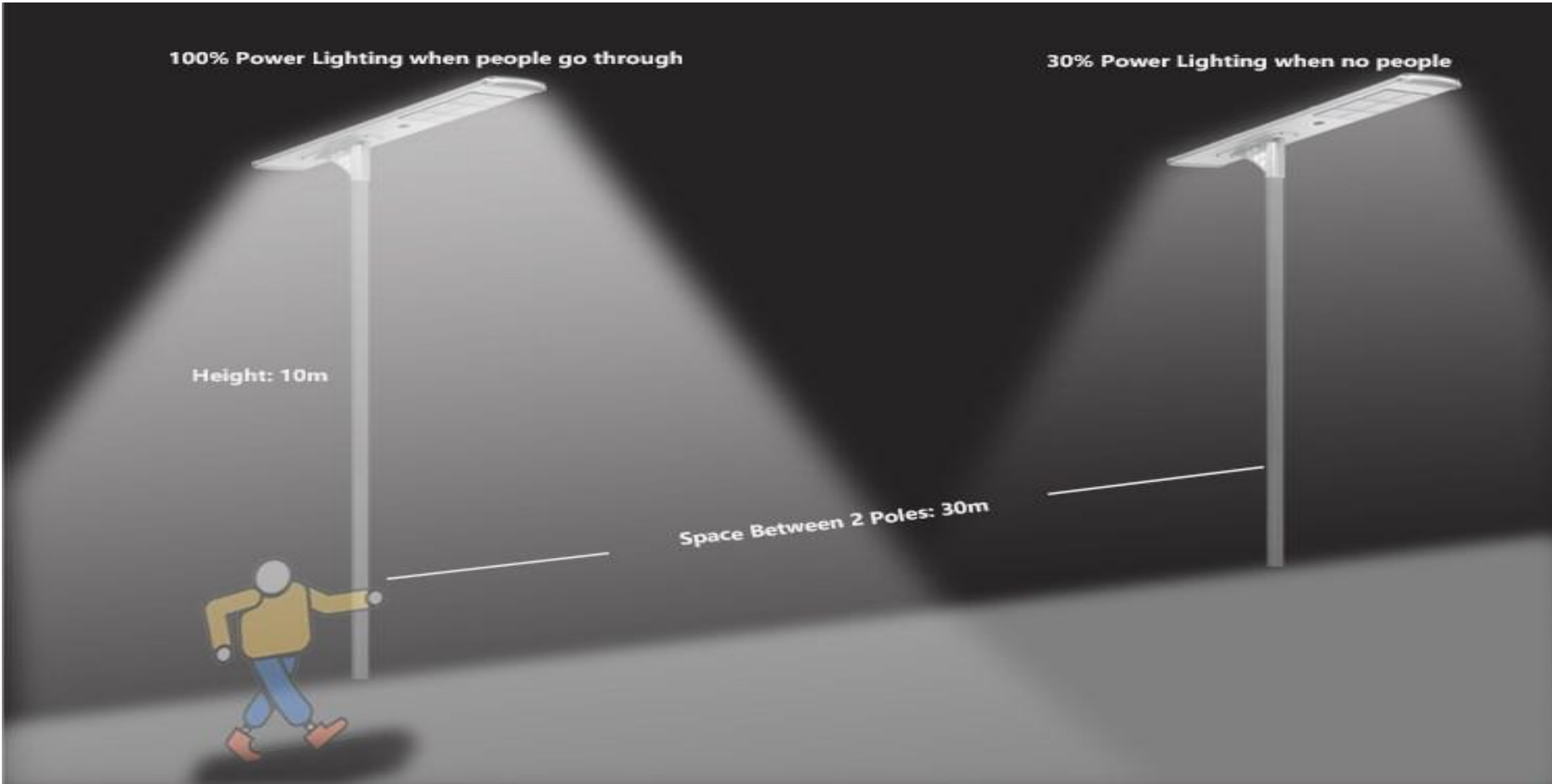
Sensor long distance reach 12m. more sensitive than PIR sensor. Energy saving.

100% Power Lighting when people go through

30% Power Lighting when no people

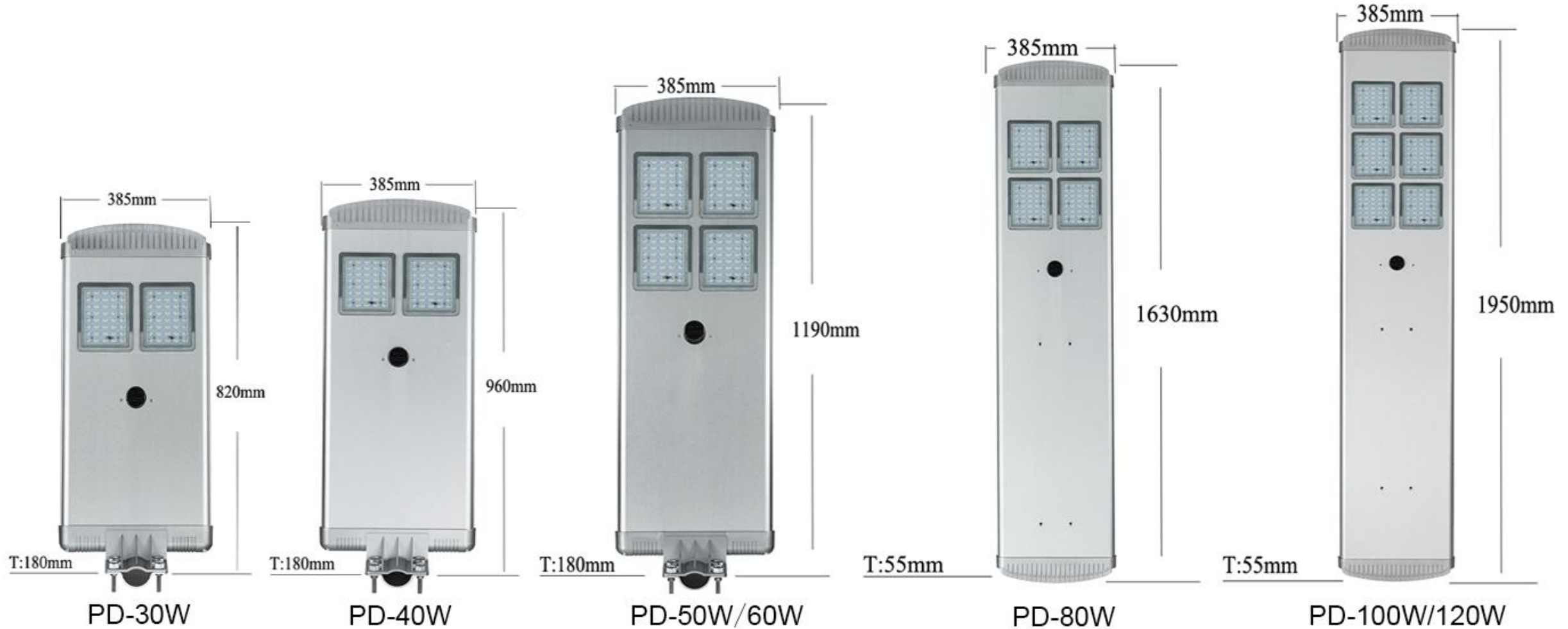
Height: 10m

Space Between 2 Poles: 30m

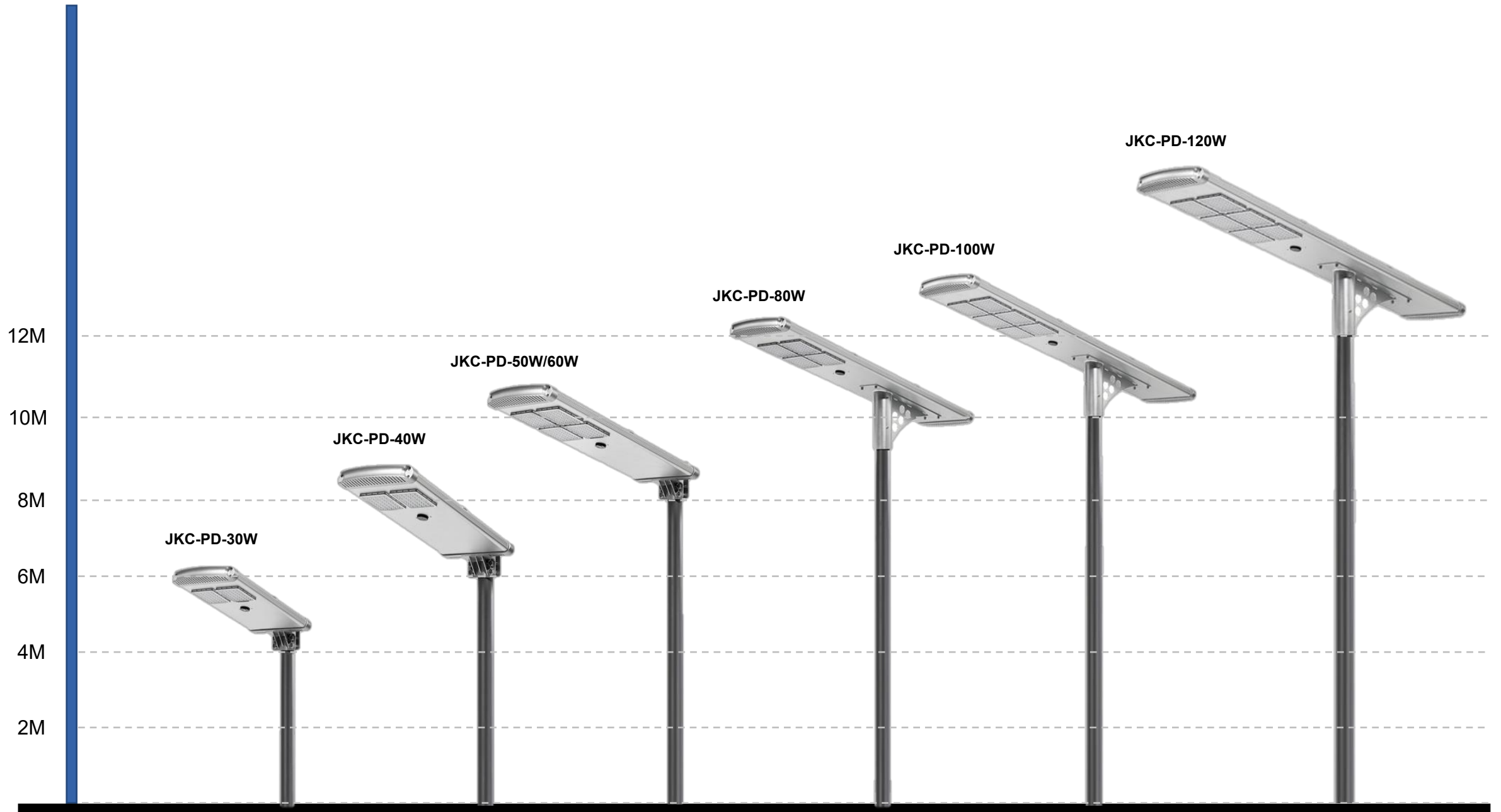


Power Options

Different power for your choice



Mounting height of each power for your reference



Specification

Model	JKC-PD-30W	JKC-PD-40W	JKC-PD-50W	JKC-PD-60W	JKC-PD-80W	JKC-PD-100W	JKC-PD-120W
Real set up power	30W	40W	50W	60W	80W	100W	120W
Lumen	5100LM	6800LM	8500LM	10200LM	13600LM	17000LM	20400LM
Color temperature	3000K 4000K 5000K 6000K 6500K						
Material	High-end aluminum alloy						
Battery	12.8V 30AH	12.8V 36AH	12.8V 48AH	12.8V 54AH	12.8V 66AH	12.8V 84AH	12.8V 90AH
Solar panel	18V 50W	18V 65W	18V 70W	18V 80W	18V 100W	18V 130W	18V 140W
LED	Bridgelux 3030						
Waterproof IP grade	IP65						
Discharge time	Lighting 12 hours/day, support 5-7 rainy and cloudy days (with motion sensor)						
Charge time	5-6 hours (bright sunshine)						
Installation diameter	65-70mm	65-70mm	65-70mm	65-70mm	70-76mm	70-76mm	70-76mm
Product size	820*385*180 MM	960*385*180 MM	1190*385*180M M	1190*385*180M M	Lamp: 1630*385*55MM / Bracket: 585*125*320MM	Lamp: 1950*385*55MM / Bracket: 585*125*320MM	Lamp: 1950*385*55MM / Bracket: 585*125*320MM
Product weight	11.5KGS	12.5KGS	15.3KGS	15.6KGS	Lamp: 18.2KG / Bracket: 2.5KG	Lamp: 22.5KG / Bracket: 2.5KG	Lamp: 23.5KG / Bracket: 2.5KG
Working temperature	-25°C—+65°C						
Certificate	CE ROHS IP65						
Warranty	3 or 5 years						
Remote control	yes, provide 1pc per order						

*More details please contact us

Package



30W/40W/50W/60W

80W/100W/120W

How to install the lamp?

- 1. When installing lights, please take it lightly and gently, and it is strictly forbidden to collide or knock to avoid damage.
- 2. There should be no tall buildings or trees in front of the solar panels to shield the sunlight, and choose to install without cover.
- 3. All the screws for installing the lamps need to be tightened and screwed tightly, and there should be no loosening.
- 4. Since the lighting time and power are set according to the factory specifications, if need special lighting mode should be notified before placing the order.
- 5. When repairing or replacing the led chip, LifePO4 battery, controller, type and power must be the same as our original, It is strictly forbidden to replace the light source with different power models from any other manufacture.
- 6. When replacing internal parts, wiring must be strictly in accordance with the corresponding wiring diagram. The positive and negative poles are clearly separated, and reverse connection is strictly prohibited.

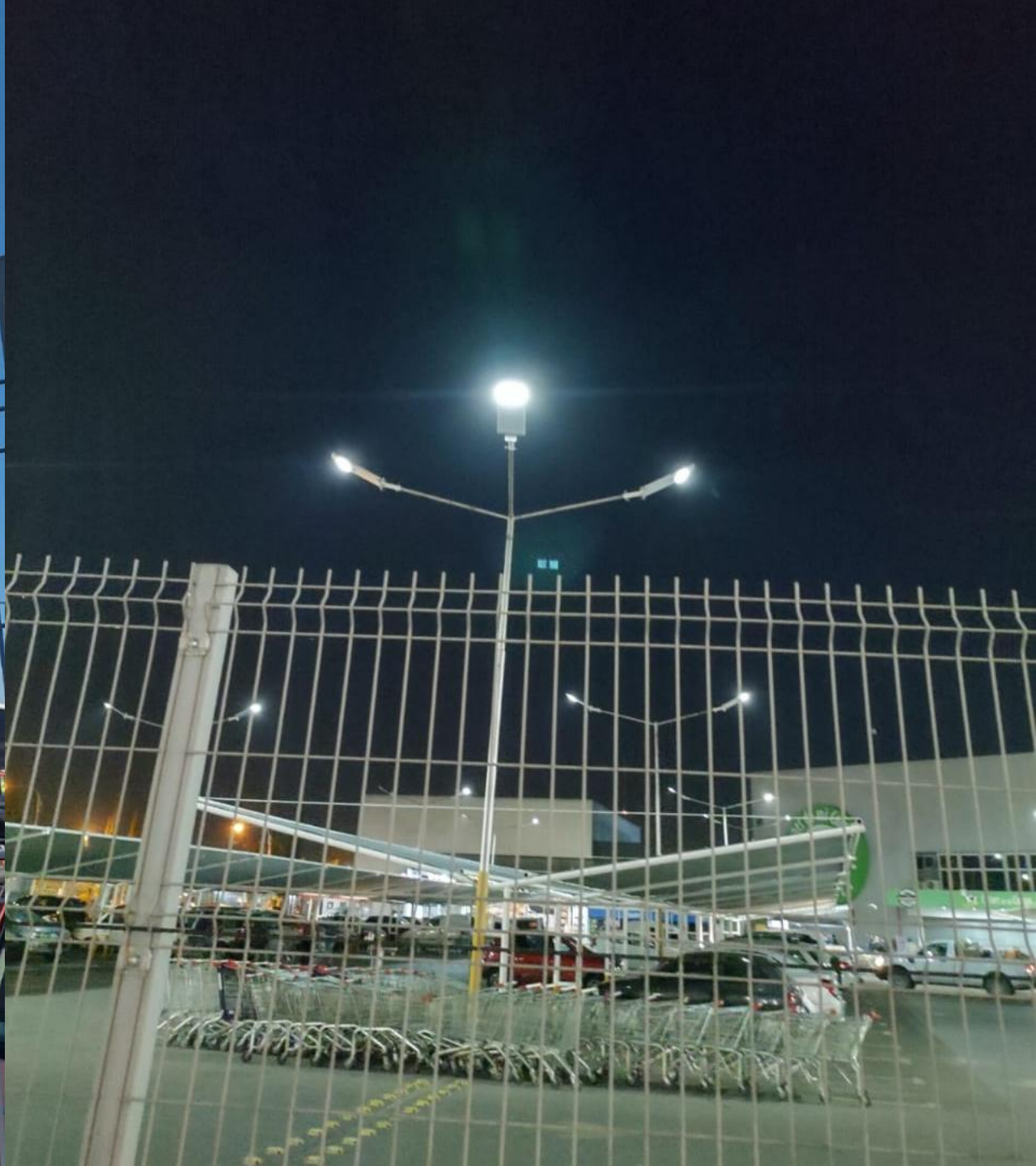


Project Case

JKC-PD-30W



JKC-PD-40W



JKC-PD-50W



JKC-PD-60W



JKC-PD-80W



JKC-PD-100W



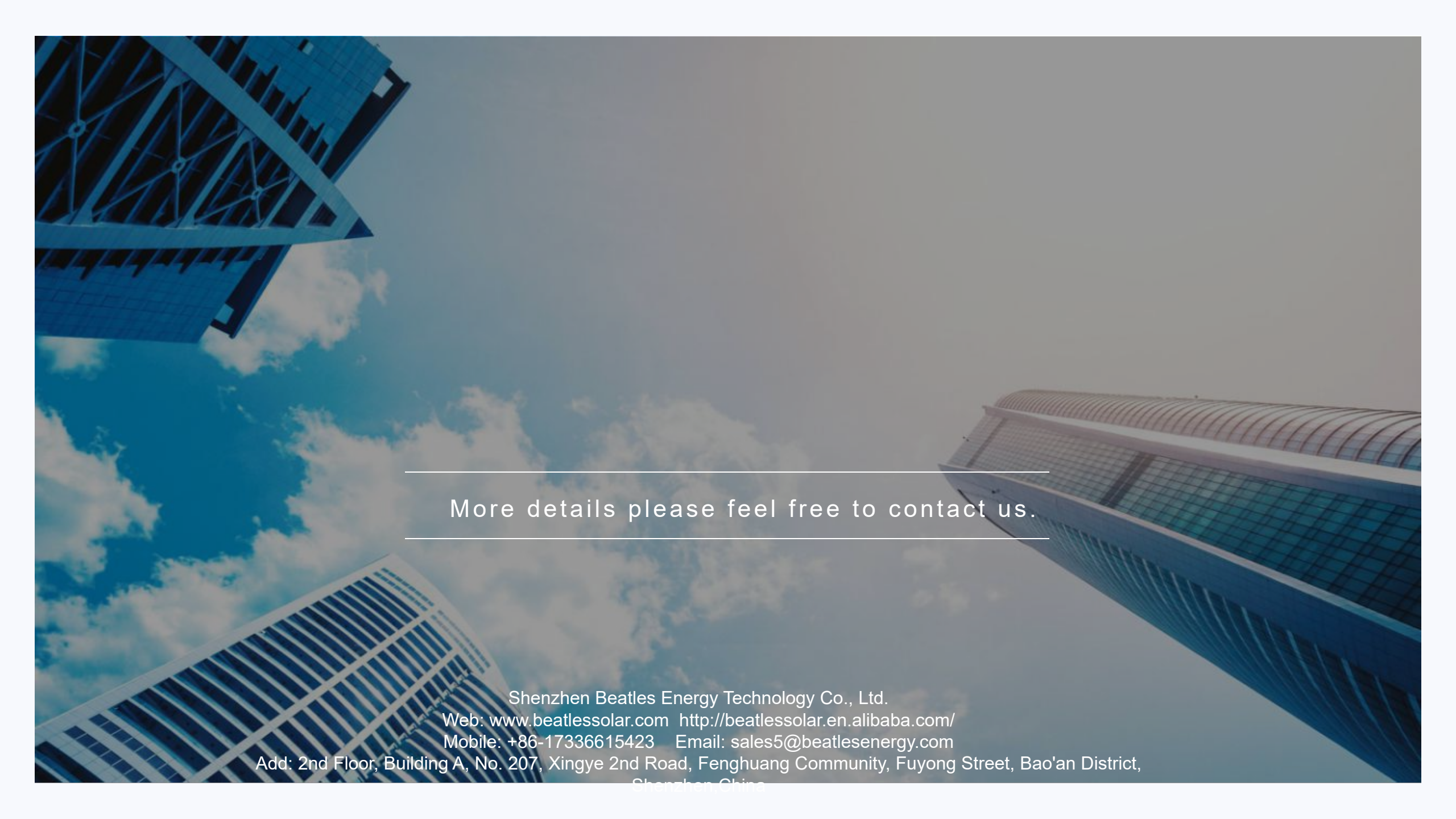
JKC-PD-120W



Certificates

Patent Certificate, CE, ROHS, IP65 Certificates





More details please feel free to contact us.

Shenzhen Beatles Energy Technology Co., Ltd.

Web: www.beatlessolar.com <http://beatlessolar.en.alibaba.com/>

Mobile: +86-17336615423 Email: sales5@beatlesenergy.com

Add: 2nd Floor, Building A, No. 207, Xingye 2nd Road, Fenghuang Community, Fuyong Street, Bao'an District,
Shenzhen, China